



Appalachian State University presents the 2011-12

Performing Arts Series



September 16, 2011

The Time Jumpers

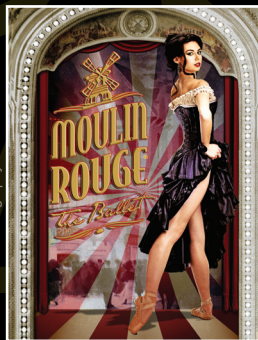
with Vince Gill,
'Ranger Doug' Green,
Dawn & Kenny Sears,
Paul Franklin and more!



October 20, 2011

KANSAS

performing with
The Appalachian
Symphony Orchestra



Serena Sandford in Moulin Rouge - The Ballet.
Photo: Nardella Photography Inc.

March 22, 2012

Moulin Rouge® - The Ballet

Canada's Royal Winnipeg Ballet



Photo: Lorenzo di Nozzi

January 28, 2012

Soweto Gospel Choir



Photo: C. Taylor Crothers

February 17, 2012

Punch Brothers featuring Chris Thile

TICKETS ON SALE NOW

800-841-ARTS or pas.appstate.edu

Performing Arts Series

PO Box 32057

Boone, NC 28608

Appalachian State University's Performing Arts Series

Tickets on Sale Now!

Ticket Prices range from \$10-\$28

Discounts available for students and children

For more information or to purchase tickets to these events,
visit pas.appstate.edu or call **1-800-841-ARTS**
or **828-262-4046**.



Follow us on Facebook and Twitter for up-to-date
information on these events and giveaways!



Scan this code to be taken
directly to pas.appstate.edu

The Performing Arts Series is sponsored by



Supporting sponsorship provided by



McDonald's of Boone



The Park Terrell Agency
828-264-8777